

**MARKS
PRYOR**
MARKING TECHNOLOGY

**Dedicated
Industrial
Coding Engineers**

**Turnkey Integrated
Solutions**

**Expert Technical
Support**

Global Coverage

Vision Solutions



INTELLIGENT MARKING SOLUTIONS

DataMouse™ Pro

Handheld Data Matrix Reader

DataMouse™ Pro - the no compromise direct mark reader at an affordable price.

The DataMouse™ Pro is the latest in the range of Data Matrix readers from Absolute Vision. It combines the benefit of totally controllable lighting with a complete exclusion of ambient light effects to deliver exceptional reading performance on the widest range of surfaces and marking technologies.

With its ultra lightweight, impact resistant housing and tiny frontal area the DataMouse™ Pro both ergonomic in use and able to access marks in confined spaces. The DataMouse™ Pro also offers the unique ability to display a real time image of the marks being read which is of

particular benefit when using Directly Applied Marks (DAMs) for the first time. These images can easily be stored and used in reports and documentation.

The DataMouse™ Pro comes complete with its Medusa™ software interface which can transfer data automatically to any third party software application and provides scope for customising the data string format. It also allows remote control of the unit via Windows TCP/IP or Rs232 communication and the transmission of Data to PLC's and other process control systems.

Key Features:

- Portable, compact and ergonomic
- USB interface requires no external power source - ideal for portable laptop applications
- Software controlled lighting giving excellent image quality on the widest range of mark types and surface conditions.

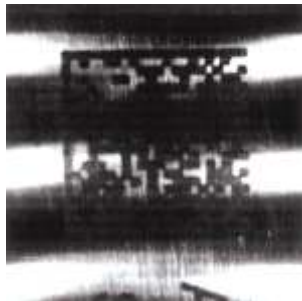


*"A new approach to
component identification
using a hand-held device"*

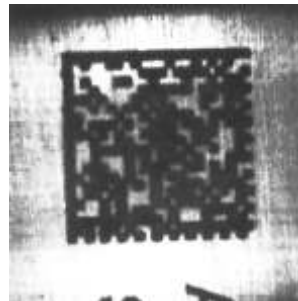
www.markspryor.com

Technical Specification

CODE Formate	Data Matrix, ISO 16022, Square and Rectangular Format, ECC 200, 0 - 140, White on Black and Black on White
Minimum Cell Size	From 0.12 mm
Marking Types	Printed Labels and Directly Applied Marks (DAM) Including: Dot Peen, Ink Jet, Laser, Electrochemical Etching
Surface Types	Flat or Cylindrical, Metal, Plastic, From rough to highly polished
Field of View	20 mm by 20 mm
Sensor	1/3" CCD progressive scan
Light Source	LED - Software controlled
Camera/Light Unit Size	Height 70.0mm, Diameter 70.0mm
Enclosure Type	Impact resistant polypropylene, No external ventilation
Weight	100 grams
Cable Length	1 metre
Signal Interface	USB
User Interface	Medusa™ GUI, including realtime video image, Windows TCP/IP and Rs232 communications
Operating System	Windows 2000 or XP



Brushed aluminium image
with normal lighting



Brushed aluminium image
with software controlled lighting

**MARKS
PRYOR**
MARKING TECHNOLOGY

AN ISO 9001-2008
COMPANY



MARKS PRYOR MARKING TECHNOLOGY PVT. LTD.

CORPORATE OFFICE & WORKS

Regd. Off.: Gat No. 135, Pirangut, Tal. Mulshi, Dist. Pune - 412 108. (M.S.) India.
Tel.: +91-20-66743300 / 66743301 Fax: +91-20-66743327, e-mail : info@markspryor.com

BRANCHES

- New Delhi • Mumbai • Bangalore • Ahmedabad • Chennai
- Coimbtore • Kolkata • Jamshedpur • Indore

www.markspryor.com