

MARKS PRYOR

MARKING TECHNOLOGY

- Single Marking System for all Requirements
- Quiet, Fast, Efficient Marking
- Stand-Alone or Integrated
- Wide Range of Options
- 2D DataMatrix Code Marking

Highly Configurable

Easy to Use

**Quiet, Fast,
Efficient Marking**

**Stand Alone
or Integrated**

**Wide Range
of Options**



INTELLIGENT MARKING SOLUTIONS

Markmate Pneumatic

Extremely User Friendly Machine

Highly configurable, fully programmable dot marking machine for use in all industrial environments where the highest build quality and technical functionality are required for the most demanding applications.

Technology

The Markmate Pneumatic Marking System is the flagship dot marking product in the Marks Pryor range. Fully programmable, highly configurable the Markmate Pneumatic is able to cope with any industrial dot marking application by virtue of its robust modular construction. The configuration options simply mean the Markmate Pneumatic can be built to meet a single or range of marking applications depending upon the users' specific requirements. The class leading software ensures the system is easy to use.

Unique head design guarantees the system is tough to last while operating in the most hostile of industrial environments. The modular construction ensures upgrade paths are available to help future proof any system purchased.

Single Marking System for all Requirements

High Flexibility suits most marking applications from a single programmable system. Two different marking windows are available as standard options: 100mm x 100mm and 150mm x 150mm to ensure the head is matched to the exact marking requirements. Variable force control to ensure optimum mark depth for all engineering materials up to 62 Rc(800 H.).

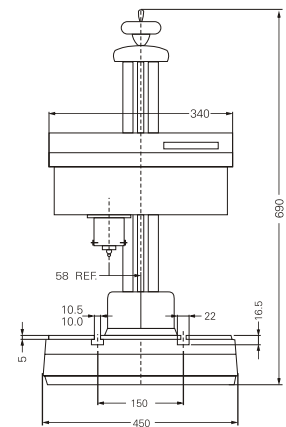
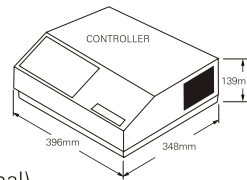
Quiet, Fast, Efficient Marking

Requiring compressed air supply and powered by a standard 240 volt (110 volt available) electric source, the Markmate Pneumatic is both highly efficient.

www.markspryor.com

Technical Specifications

Weight:	Marking head/table/column: 32kg
Electrical Supply:	240v 50hz, 110v 60hz
Marking Area:	100mm x 100mm (150mm x 150mm optional)
Memory Capacity:	Up to 1350 inscription layouts
Stylus:	4mm x 70mm (55mm, 100mm & 160mm length optional)
Controller:	Embedded LCD type
Keyboard:	PS2 type, 'mini' keyboard optional
X, Y Axis Control:	Steppermotor driven
Start/Stop Box:	Twin button on manual
Marking Format:	Dot Matrix 5 x 7, 7 x 9, Varidot, 2D Data Matrix coding



Marks Pryor reserves the right to amend product specifications without notice

Stand Alone or Integrated

The separate controller protects the electronics from the mechanical shock loading generated in the marking head and the large high contrast LCD screen gives users clear control over the marking operation without the need for a separate PC. The controller also provides connectivity options through RS232 serial and digital I/O ports.

Wide Range of Options

Hardware, software and after sales options ensure the Markmate Pneumatic meets your exact needs.

2D Data Matrix Code Marking

The Markmate Pneumatic meets rigorous demands of 2D Data Matrix Code Marking.

Stylus Options

55, 100, 160mm lengths available. Solid Carbide, sharp point and mini-stress tipped styli available on request. Customised variations available on request.

Coding and Vision Systems

2D coding and vision reading system solutions are available.

Customised Solutions

Marks Pryor have extensive mechanical and software design resource dedicated to the provision of customer specified marking solutions designed to order. Marks Pryor will manage the entire project from product selection and trialling through to installation, commissioning and training.



**MARKS
PRYOR**
MARKING TECHNOLOGY

AN ISO 9001-2008
COMPANY



QAC / R91 / 1520

MARKS PRYOR MARKING TECHNOLOGY PVT. LTD.

CORPORATE OFFICE & WORKS

Regd. Off.: Gat No. 135, Pirangut, Tal. Mulshi, Dist. Pune - 412 108. (M.S.) India.

Tel.: +91-20-66743300 / 66743301 Fax: +91-20-66743327, e-mail : info@markspryor.com

BRANCHES

- New Delhi • Mumbai • Bangalore • Ahmedabad • Chennai
- Coimbtore • Kolkata • Jamshedpur • Indore

www.markspryor.com